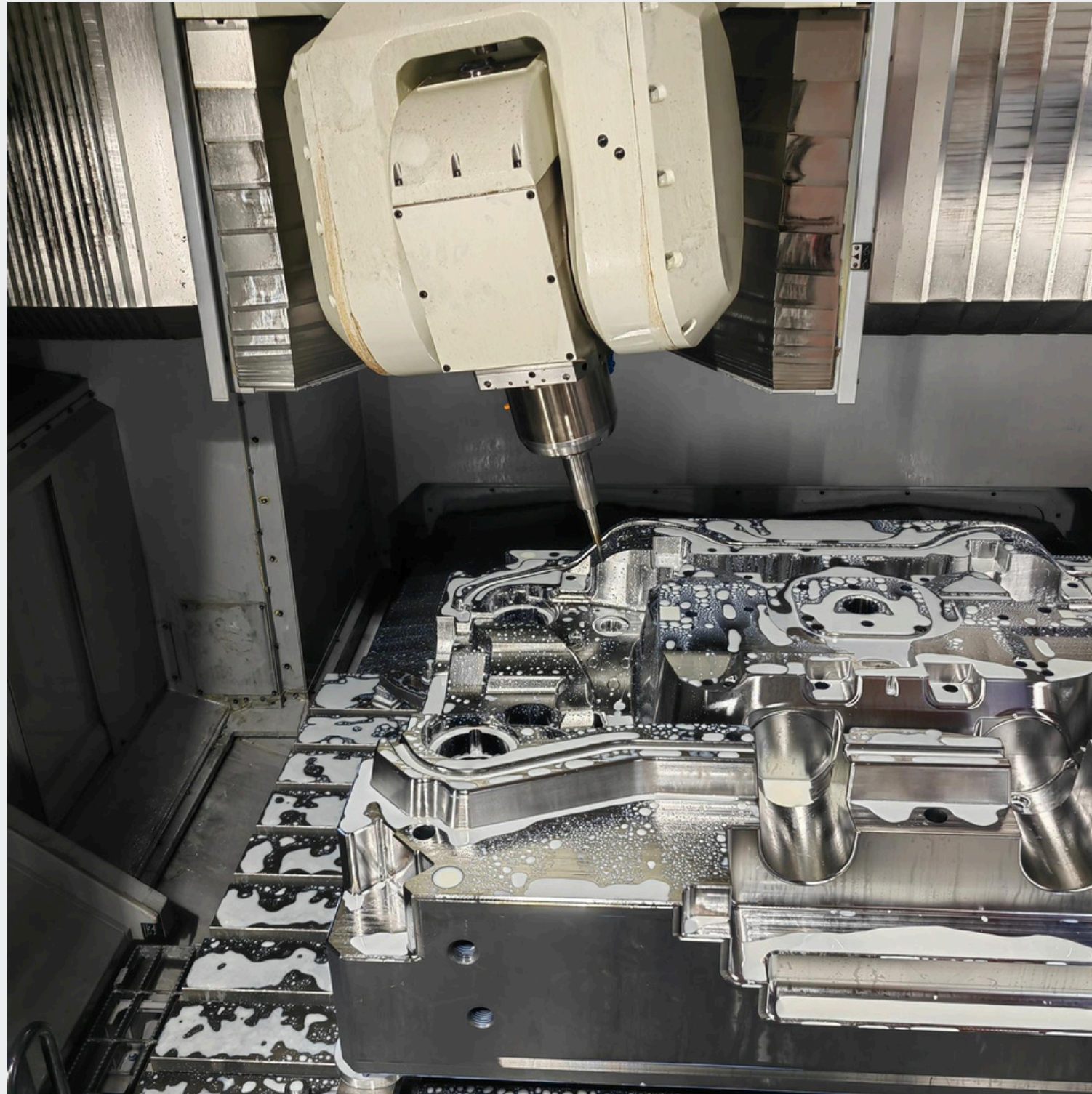




maple**mold**



“We build the tools that build the future”



**High-precision tooling---Local support in
North América**



Maquinados de Saltillo was founded as a local machining shop in Coahuila, Mexico.

1992

Jinan Foundry pattern Co, was founded in 1992, as one of the oldest and privately owned pattern shop

- Gooseberry was created to meet the growing demand for engineering and mold manufacturing.
- Achieved ISO 9001:2008 certification.

2014

Our CEO was appointed Vice President of AMMMT, the nationwide Mexican Mold Association.

2020

- Our CEO was appointed President of AMMMT, strengthening leadership across the industry.
- Gooseberry expanded into a new 12,733 ft² facility in Saltillo, Coahuila.

2022

Employee : **110 employees**

2025
MAPLEMOLD is born, a strategic integration with global vision, cutting-edge technology, and production capacity to strengthen North America's supply chain.



MapleMold



MAPLEMOLD ADVANTAGE

- 🕒 Shorter lead times — Hybrid manufacturing (Asia + Mexico).
- 📍 Local engineering support — Troubleshooting, maintenance & modifications.
- ⚙️ World-class machines — Makino, Takumi, Huron high precision.
- 🌐 Certified supply chain — ISO 9001.
- 💰 Competitive cost



Before & After

- 🕒 Mexico manufacturing 9000 kg tool 8-12 Weeks
- 🕒 Hybrid manufacturing 9000 kg tool 6-8 Weeks
- 🕒 Mexico manufacturing 2000 kg tool 6 Weeks
- 🕒 Hybrid manufacturing 2000 kg tool 30 days

RESULTS

- 💰 Saved 20% costs vs U.S supplier
- 🕒 Reduce manufacturing time 20-30%
- 🛠️ Both scenarios considering engineering.



World-class manufacturing Capacity

MACHINING CENTERS

- 5-Axis: Makino V90S — Ultra precision ± 0.001 mm
- Gantry VMCs: Takumi H16M, Huron VX20/VX10, VWinner, Taizheng — Large-format machining up to 4000×3200 mm
- Vertical & Horizontal VMCs: Makino F8, Nicolas Correa CF-22 Plus, Litz 850, Taiyu VMC Series — Ideal for steel & aluminum components

22 CNC machines operating at 60 % average capacity

✨ From rough machining to final verification — all under one roof.

Over 30 CNC machines across Mexico and Asia, integrating in both continents 5-axis Makino V90S, gantry, EDM, and metrology systems for high-precision mold manufacturing.



SPECIAL PROCESSES

- Gun Drilling: Taili TL-1600 — Deep holes up to 1600 mm
- EDM (Wire & Sinker): Mitsubishi & Agie — ± 0.001 mm accuracy
- Turning: Hyundai A60 CNC Lathe — High-speed precision turning

METROLOGY & QUALITY

- Temperature-controlled CMM lab (20 °C)
- 3D scanning for dimensional validation
- Full traceability from steel certificate to final inspection report

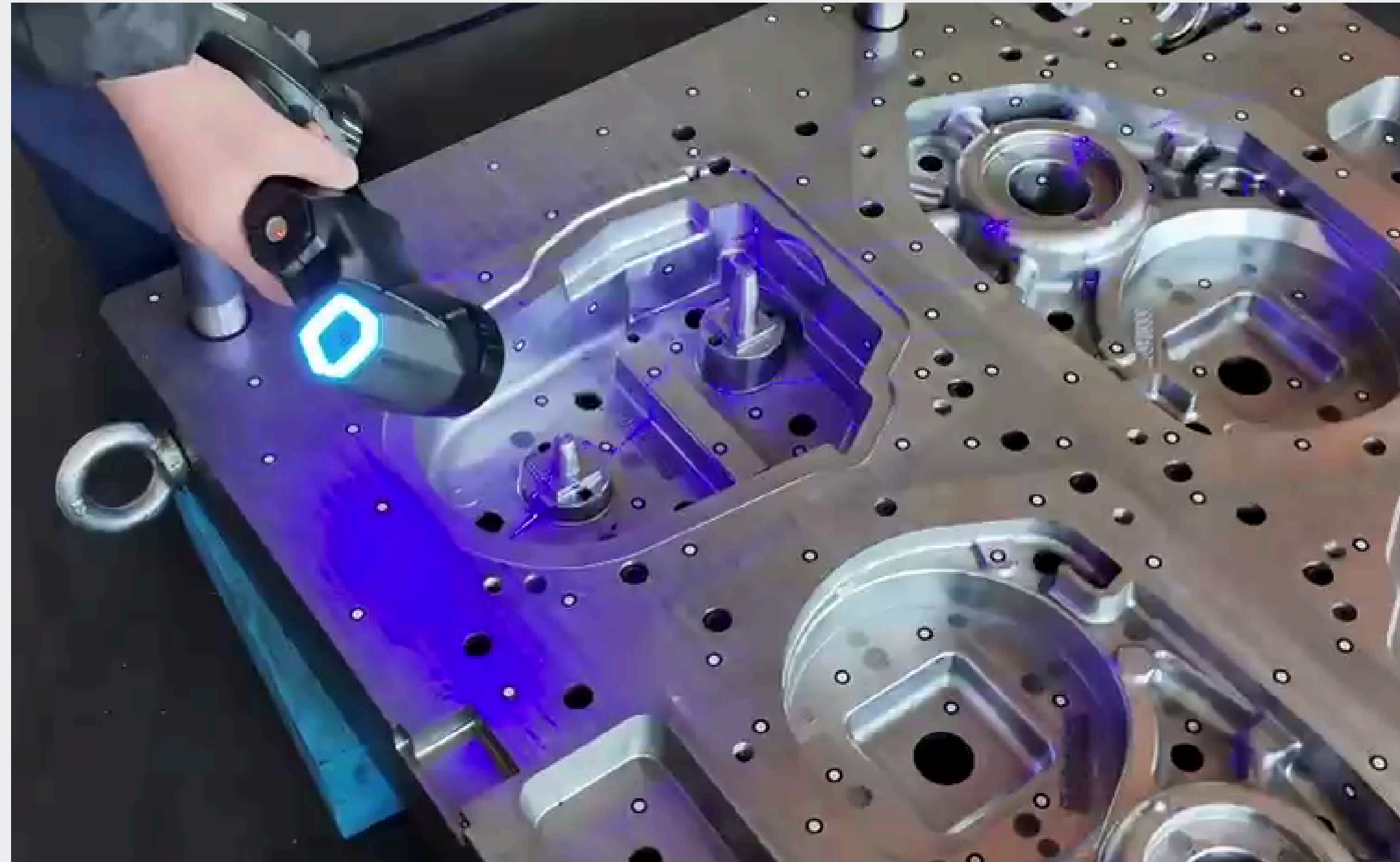


BEYOND TOOLING---Engineering, service & support

At Maplemold, we go beyond manufacturing.

Our engineering and post-sale services ensure long tool life, process stability, and consistent performance for our customers across North America.

- Reverse engineering & 3D scanning
- validation
- Tool adjustments & fine-tuning
- Onsite support in Mexico, Canada & the U.S.
- Repair and modification of molds & casting tools
- Engineering optimization to reduce downtime



OUR PROCESS---From Design to Delivery

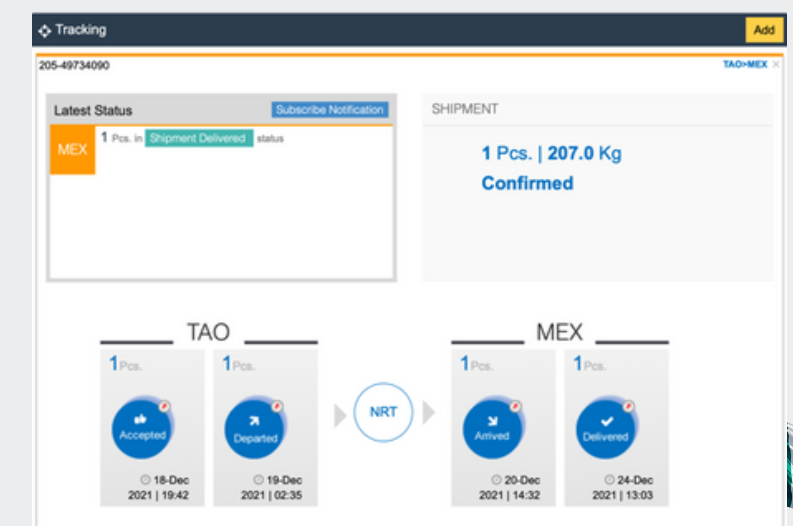
Every project follows a structured process that ensures precision, traceability, and fast turnaround

Below 4 tons projects

- Engineering: 15 days
- Manufacturing: 30 days
- Verification: 3 days
- Delivery: as scheduled

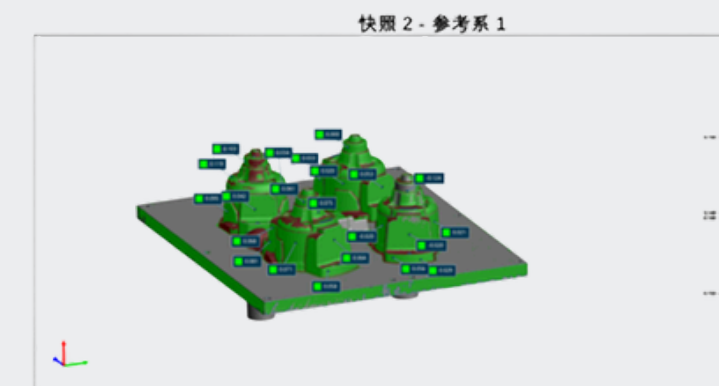
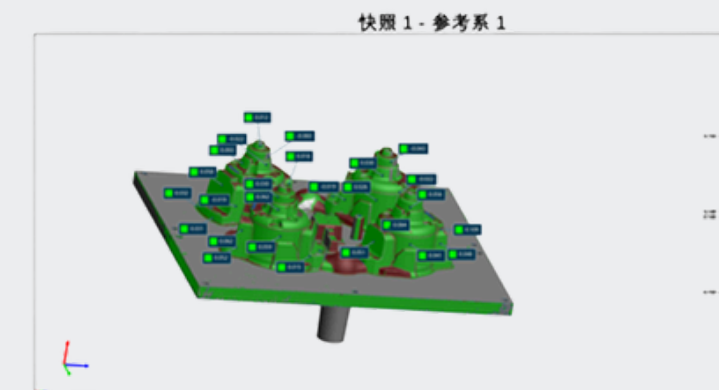
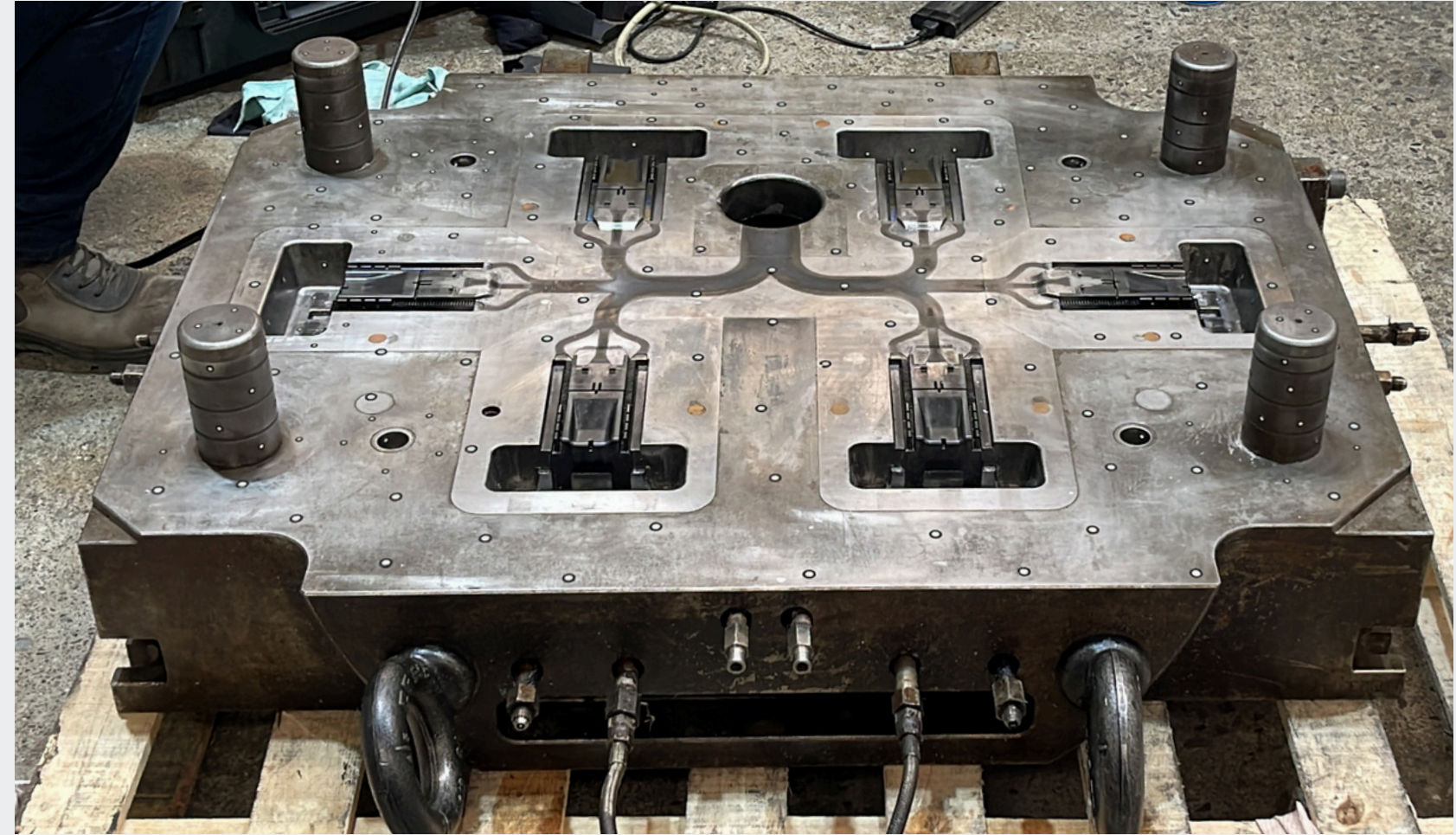
✕ Flight Booking				
NH8506	TAO ▶ NRT	19-Dec 2021 02:25(STD) 06:15(STA)	19-Dec 2021 03:50(ATD) 07:20(ATA)	1 Pcs. 207.0 Kg
NH0180	NRT ▶ MEX	20-Dec 2021 16:50(STD) 14:05(STA)	20-Dec 2021 16:52(ATD) 14:32(ATA)	1 Pcs. 207.0 Kg

📄 History				
✓ Shipment Accepted at TAO	18-Dec 2021 19:42	1 Pcs. 207.0 Kg		
✓ Freight on Hand at TAO	18-Dec 2021 19:42	1 Pcs. 207.0 Kg		
✓ Shipment Manifested at TAO	19-Dec 2021 00:51	1 Pcs. 207.0 Kg	NH 8506 19-Dec	PMC10776NH
✓ Shipment Departed at TAO	19-Dec 2021 02:35	1 Pcs. 207.0 Kg	NH 8506 19-Dec	PMC10776NH


VERIFICATION CAPABILITY

- We ensure 100% dimensional verification before delivery.
- Our process begins with a 3D scanner to capture the overall geometry of the pattern, followed by CMM inspection to validate all critical dimensions.
- The CMM laboratory is maintained at a constant 20°C, and all patterns are conditioned in this environment for at least 24 hours prior to inspection to guarantee stability and accuracy.
- In addition, the hardness of the patterns is verified prior to machining to ensure compliance with customer specifications.
- The CMM's accuracy is calibrated annually by certified specialists from the manufacturer, guaranteeing the highest level of precision.



CERTIFICATION

• We are certified with ISO9001:2015, ISO 45001:2018, ISO 24001:2015, and GB/T 29490:2013

• We are qualified to apply for IATF 16949:2016 certification, but haven't done so as it was not required by any of our current clients.



ISO 14001:2015
Environmental Management System
Certification



ISO 9001:2015
Quality Management System Certification



ISO 45001:2018
Occupational Health and Safety Management
System
Certification

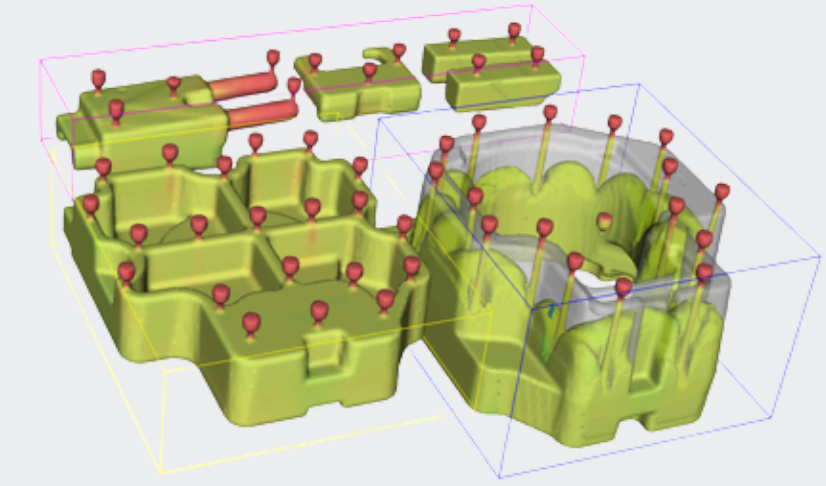
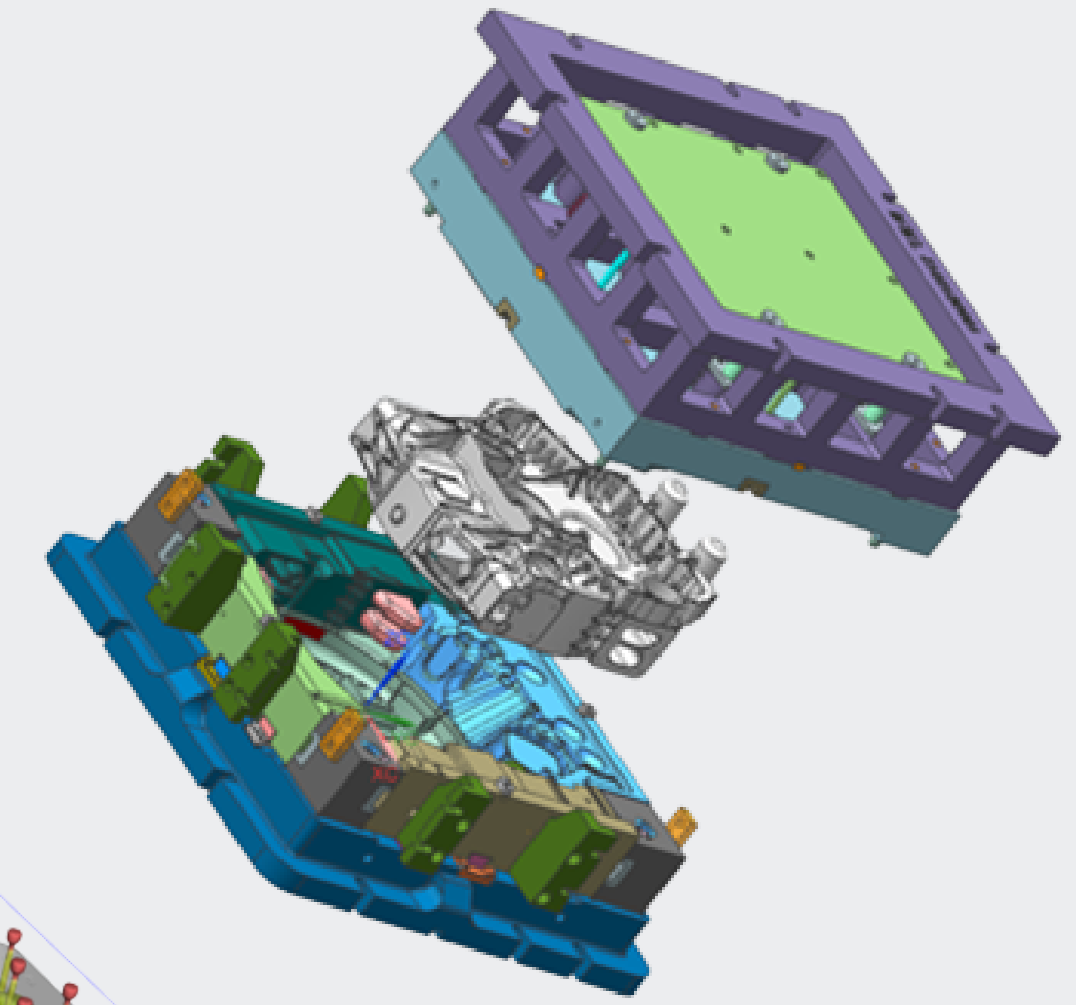
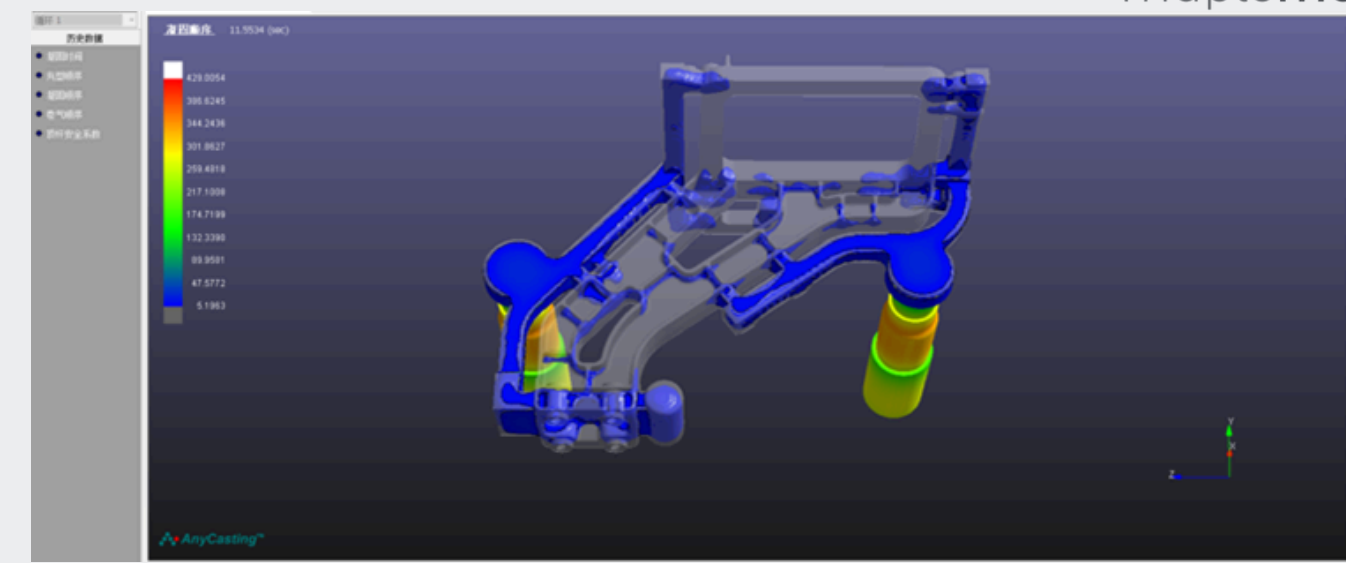


GB/T 29490-2013
Intellectual Property Management System
Certification



SOFTWARE CAPABILITY

- 3D Design Software: UNIGRAPHIC NX and SView
- 2D Design Software: GSTAR CAD and HOTEAM CAD
- Confidentiality Management: HOTEAM PDM and TIPRAY Confidential
- CNC Programming Software: Hypermill, Powermill and Work NC
- Self-developed Business/Operation Support System tailed to our needs
- In house simulation: Anycasting








Macroscopic Density Select



Industries We Serve

We proudly support leading **Tier-1 and OEM** manufacturers across multiple industries, delivering precision tooling and reliable engineering support.

-  Automotive
-  Foundry / Casting
-  Plastic Injection
-  Aerospace
-  Energy



“Trusted by Tier-1 suppliers across North America.”



LET'S BUILD YOUR NEXT TOOLING SOLUTION TOGETHER



Shuhao Zhao
Global CCO



Cecilio Reyna
CTO America



Juan Benavente
CEO America

"Precision. Partnership. Performance."



THANK YOU

